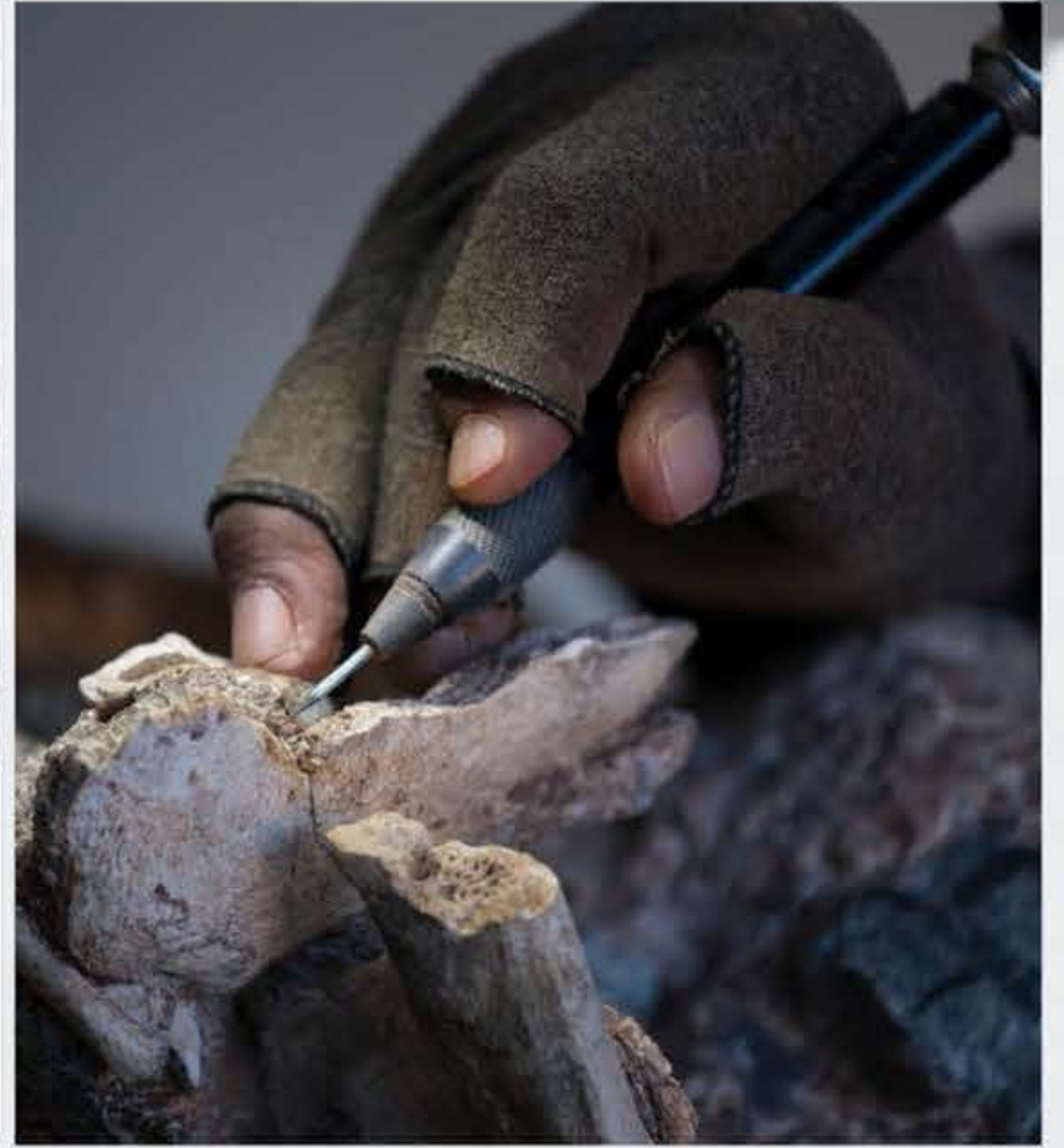


**SOUTHERN SKY  
ADVENTURES**

IN YOUR WILDEST DREAMS

# *From Fins to Fingers:* An Evolutionary Saga Spanning 360 Million Years



Embark on a  
paleontological  
journey of a lifetime!



[www.southernskyadventures.com](http://www.southernskyadventures.com)



15 Days / 16  
Nights



+1 (770) 324-0068



[info@southernskyadventures.com](mailto:info@southernskyadventures.com)

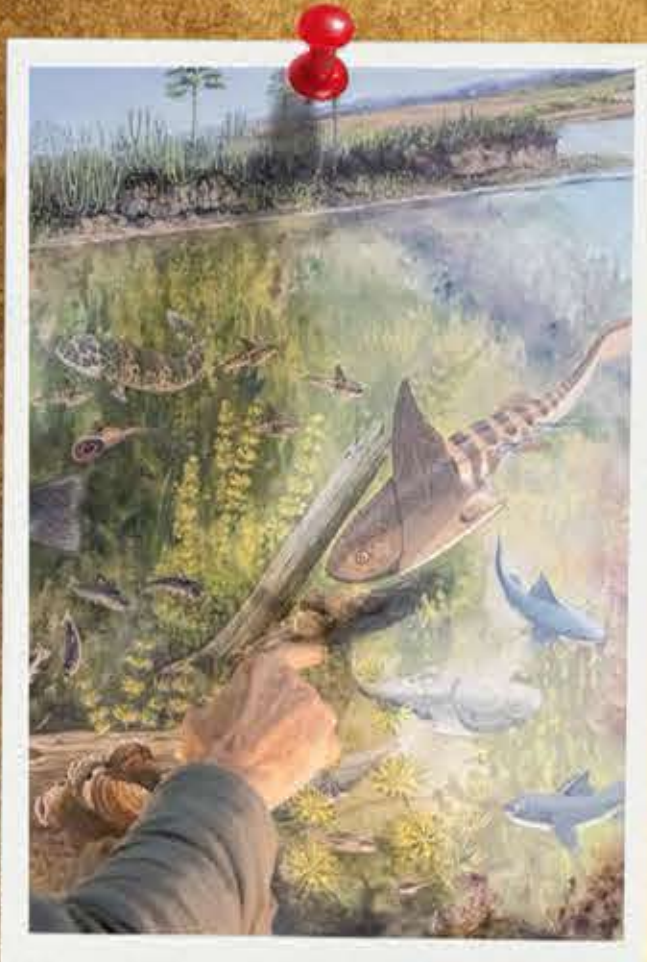
# *What to expect...*

Embark on a journey through 360 million years of Earth's history in the captivating Cape and Karoo Basins. Explore the origins and evolution of land-dwelling vertebrates from the Devonian to Triassic periods and early humans. Witness landscapes bearing the geological signatures of the Cape and Karoo Supergroups, harboring a treasure trove of fossils from ever-changing environments when Earth's continents were interconnected.

Guides will lead you through Devonian estuarine beds, Carboniferous glacio-marine diamictites, Permian floodplains, and the Triassic, unveiling the consequences of two major mass extinctions, including the devastating Permian/Triassic event. Discover collections showcasing diverse fossil fish, including ancient lampreys, coelacanths, and long-extinct armored fish. Encounter early tetrapod fossils, therapsids (ancestors of mammals), and the ancient common ancestor of dinosaurs, crocodiles, and birds.

Experience historic towns, Karoo's pristine air, and stunning sunset/star gazing spots. Join fossil hunts on traditional sheep farms, explore game parks, and relish African cuisine. This Gondwanan odyssey offers a condensed yet unforgettable immersion into Earth's prehistoric wonders.

Explore early human habitats and lifestyles, revealed through paleoanthropological findings in South Africa's Cradle of Humankind. The tour offers a glimpse into ancient human societies, their tool use, dietary habits, and social structures. This intersection of human evolution with the broader geological and paleontological context of the Cape and Karoo Basins will deepen the understanding of our species' place in Earth's history.





## Trip Summary:

- A** Port Elizabeth/Gqeberha - Starting and ending point of the journey.
- B** Makhanda - Guests are transported to African Safari Lodge near Makhanda.
- C** Howison's Poort & Waterloo Farm - Historical fossil site.
- D** Grahamstown - Historic sites and coelacanth display at SAIAB.
- E** Graaff-Reinet - Travel through this historic town, with accommodation at the Drosty Hotel. Visits to the Valley of Desolation in Camdeboo National Park and Karoo Origins.
- F** Nieu Bethesda - Visit the Kitching Fossil Exploration Centre and the Owl House.
- G** Lootsberg Pass - Exploration of evidence of the Permian-Triassic extinction event.
- H** Doornplaats - Fossil site hosting a variety of ancient fossils.
- I** Addo National Park - Final part of the journey includes a game drive and overnight accommodation.
- J** Johannesburg
- K** Cradle of human kind and surrounding areas - Early humans

# Meet your team:



## Rob Gess

Dr Rob Gess grew up in the Eastern Cape and is passionate about Earth history, palaeontology and natural science. He is South Africa's principal researcher on Devonian Ecosystems and has found and described most of the known Devonian plants and vertebrates from South Africa. He is based at the Albany Museum in Makhanda (Grahamstown) where he heads the Devonian Ecosystems Project. Much of his ongoing research has focused on excavation and description of the exceptional Late Devonian Waterloo Farm fossil site. He has a natural gift for bringing his science alive for a wide range of audiences.



## Bruce Rubidge

Dr Bruce Rubidge was director of palaeontology at the University of the Witwatersrand for three decades and is currently Distinguished Professor. He has undertaken extensive fieldwork on the remarkable Karoo-aged fossil record in different countries, their significance in understanding mammal origins, and application in stratigraphy. He's authored 200+ papers, several books, and supervised 40+ postgraduate students. Passionate about South Africa's paleontological heritage, he curates museum exhibits and is founding the Karoo Origins Palaeontological and Research Centre.

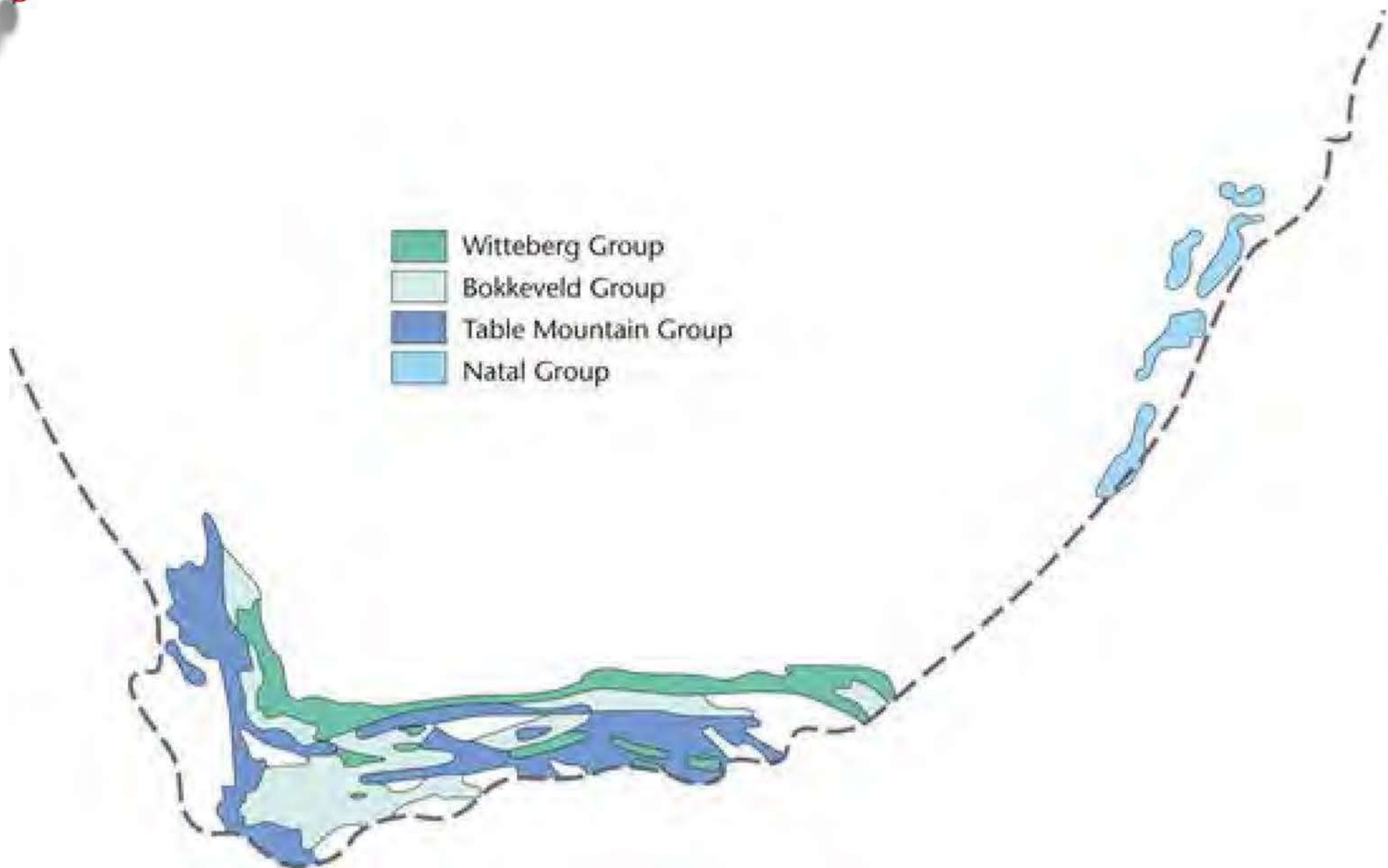


## Christine Steininger

Dr. Christine Steininger, is a palaeoanthropologist, on human evolution. As the first Asian woman to direct key early hominin sites in the Cradle of Humankind, her expertise spans continents. Beyond science, she champions sustainability and biodiversity. With interests in faunal analysis and climate change's impact on mammals, she is a passionate educator and aviation enthusiast. Dr. Steininger's tours feature a unique "cast of characters"—fossils and artifacts enhancing the experience. They add depth to her captivating narrative, making this tour an unparalleled journey through time and human history.

# From Fish to Four Legged Beasts

- Presented by Rob Gess



# Day 1:

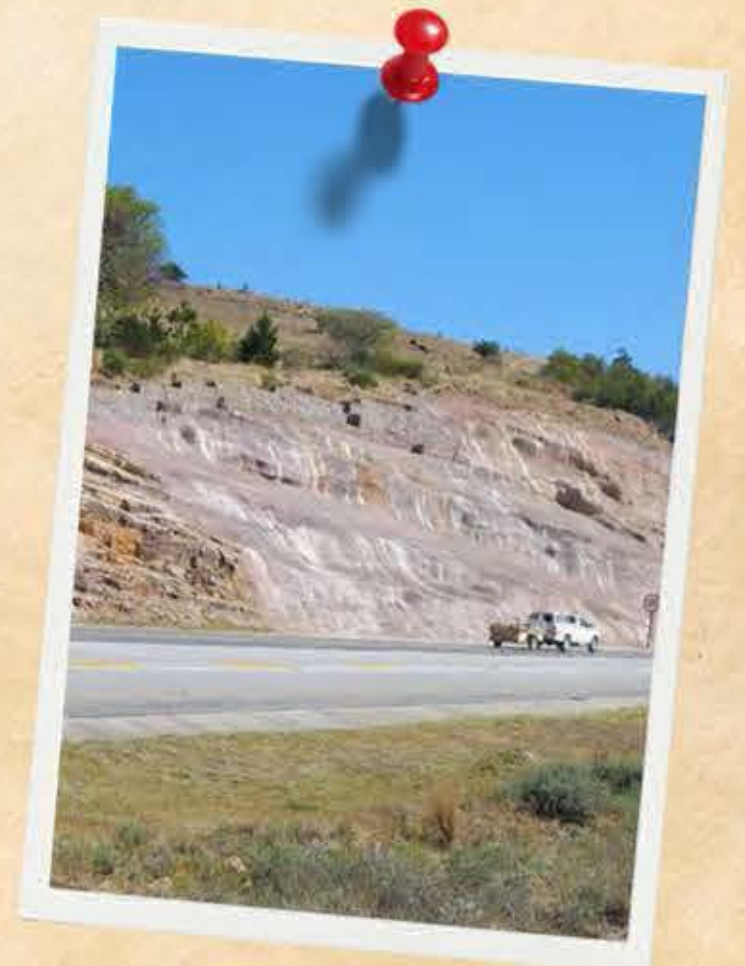
You will arrive at Gqeberha airport and be transported to African Safari Lodge, 15 minutes from Makhanda. Here, you can enjoy a guided walk with game and plant viewing, and see the beautiful valley thicket vegetation type. You will have sundowners overlooking the Kariega River valley, and be introduced to Dr Robert Gess, South Africa's leading researcher on Devonian ecosystems and principal investigator of the world-famous Waterloo Farm site. After dinner, you will be treated to an illustrated talk, introducing the geological evolution of the strata to be viewed during the tour.



*Kowieria alveofolis* - a Herbaceous lycopod (clubmoss)



# Day 2:



*Archaeopteris notosaria* - a tree frond

Stop at Howison's Poort historical fossil site, one of the sites discovered by Andrew Geddes Bain during roadworks. This site is the source of many fragmentary plant fossils from the Witpoort Formation (Witteberg Group), discovered before more complete ones from Waterloo Farm. You will also observe the base of the Witpoort Formation where underlying shallow marine mudstones are overlain by fluvially dominated sandstones, initiating the first package of terrestrial sediments in South African journey. Black shale layers, such as the Howison's Poort and Waterloo Farm fossiliferous layers, represent estuarine deposits formed during minor sea level rises, during the Famennian (372 - 359myo), the final age of the Devonian Period.



# Day 2:

...Continued...



*Hungerfordia fionae* - a seaweed

Stop at Monument turnoff for a brief view of the top of the Witpoort Formation in an overturned fold. The change from the quartzitic strata of the Witpoort Formation to the mud-rich overlying strata results from the Tournasian transgression. This coincides with the final pulse of the End Devonian Mass Extinction Event (EDME), the second of the Big Five extinction events that decimated life on earth. The EDME accounted for the largest cull of high taxonomic order vertebrates in earth history, and laid the way for the diversity we see today.

Visit the roadcuttings at Waterloo Farm, the original site of the most important Famennian fossil locality in the Southern Hemisphere. You will hear how the site was discovered unexpectedly during road works in 1985, and see fluvial sandstone layers overlain by fossil rich estuarine black shales.



Head, trunk and carapace of *Bothriolepis africana* (a placoderm fish)



*Umzantsia amazana* - a tetrapod by Maggie Newman

The Waterloo Farm Gallery, located just 1.5 kilometers from Waterloo Farm at the Devonian Ecosystems Project building, is where you will visit next! This location is where South Africa's first diamond was discovered. Explore a captivating display of fossils complemented by meticulous artwork by Maggie Newman, offering a vivid glimpse into the prehistoric estuarine environment. Waterloo Farm's fossil site, provides the sole example of soft-tissue preservation from an estuary of this age. Situated within the Devonian Antarctic circle, it contrasts with all other significant sites from this era which were deposited in the tropics.



# Day 2:

...Continued...



Continue your paleontological journey at Waterloo Farm, encountering armor-plated fish, early jawed vertebrates, coelacanths, and tristichopterid fish—the predecessors of tetrapods. Explore remains of Africa's earliest tetrapods, among the world's earliest known, originating outside the tropics. Gain insights into how the proliferation of trees contributed to the End Devonian Extinction Event.



*Serenichthys kowiensis* - Complete juvenile skeleton of the coelacanth



*Priscomyzon riniensis* - the worlds oldest lamprey

Enjoy a relaxing tea session in Dr. Richard's drawing room, where the Hope Town diamond was identified. This provides an opportunity for informal discussions among the group. Following the tea, embark on a tour of the collection, gaining access to many hidden treasures not typically on public display. Among these are delicate soft tissue-preserved specimens, including the world's oldest fossil lampreys. Finally, witness a demonstration of splitting shale blocks from Waterloo Farm, potentially revealing the next significant discovery.

Start your afternoon with a visit to SAIAB, exploring the coelacanth display and delving into the remarkable research of Professor JLB Smith. Discover the epic story of the second specimen found in the Comore Islands. Next, embark on a tour of historic sites in Grahamstown. Admire its diverse architecture and learn about its role in early colonial wars. Then, head to Signal Hill at the end of Mountain Drive for sundowners. Enjoy panoramic views and a talk about the Cretaceous to Tertiary wave cut platform and the adjacent Grahamstown Peneplane.



*Gondwanascorpio emzantsiensis* - Pincer of scorpion





## Day 3:



*Africanaspis edmountaini* - a placoderm fish

Travel from Mahkanda to Graaff-Reinet. The route will traverse rocks of the Cape and Karoo Supergroups via the historic Queens Road, built by Andrew Geddes Bain, the father of South African geology and the first person to produce a geological map of South Africa. Visit Bains Monument above Ecca Pass for a discussion on Bain and his contribution to South African Geology and the earliest discovery of Karoo fossils in South Africa. Traverse countryside viewing diamictites of the Dwyka Group, a record of the longest ice age affecting Gondwana 300 million years ago.

Continue through Ecca Pass, type locality of the Ecca Group, to view outcrops of the Whitehill Formation which hosts a variety of invertebrate and fish fossils, as well as *Mesosaurus*, the earliest reptile from the southern hemisphere. Continue through Ecca Pass viewing the rocks of the Ecca group deposited in a fluvially dominated deltaic succession and on to the palaeoschoreline of the ancient Karoo sea, the contact of the Ecca and overlying Beaufort groups.

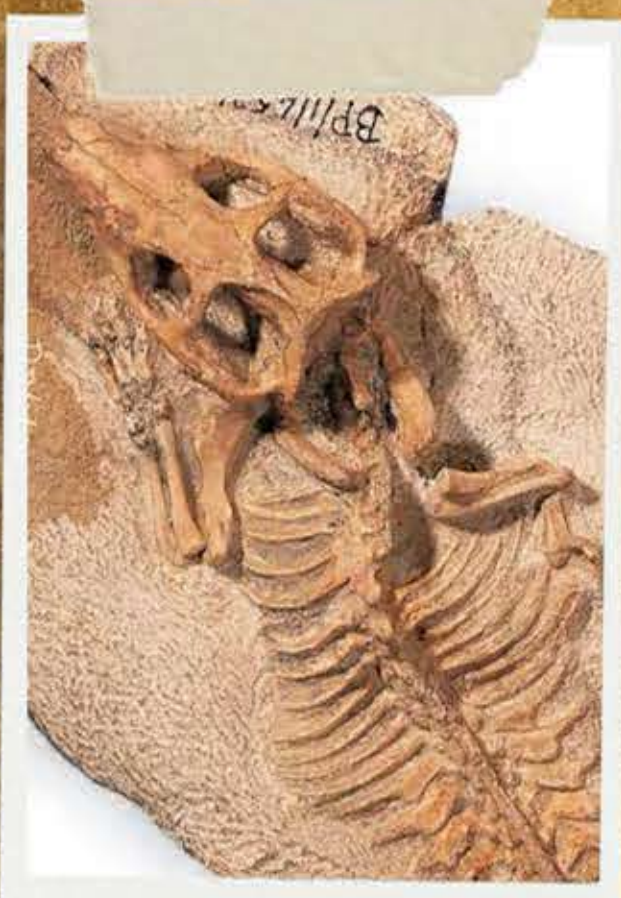
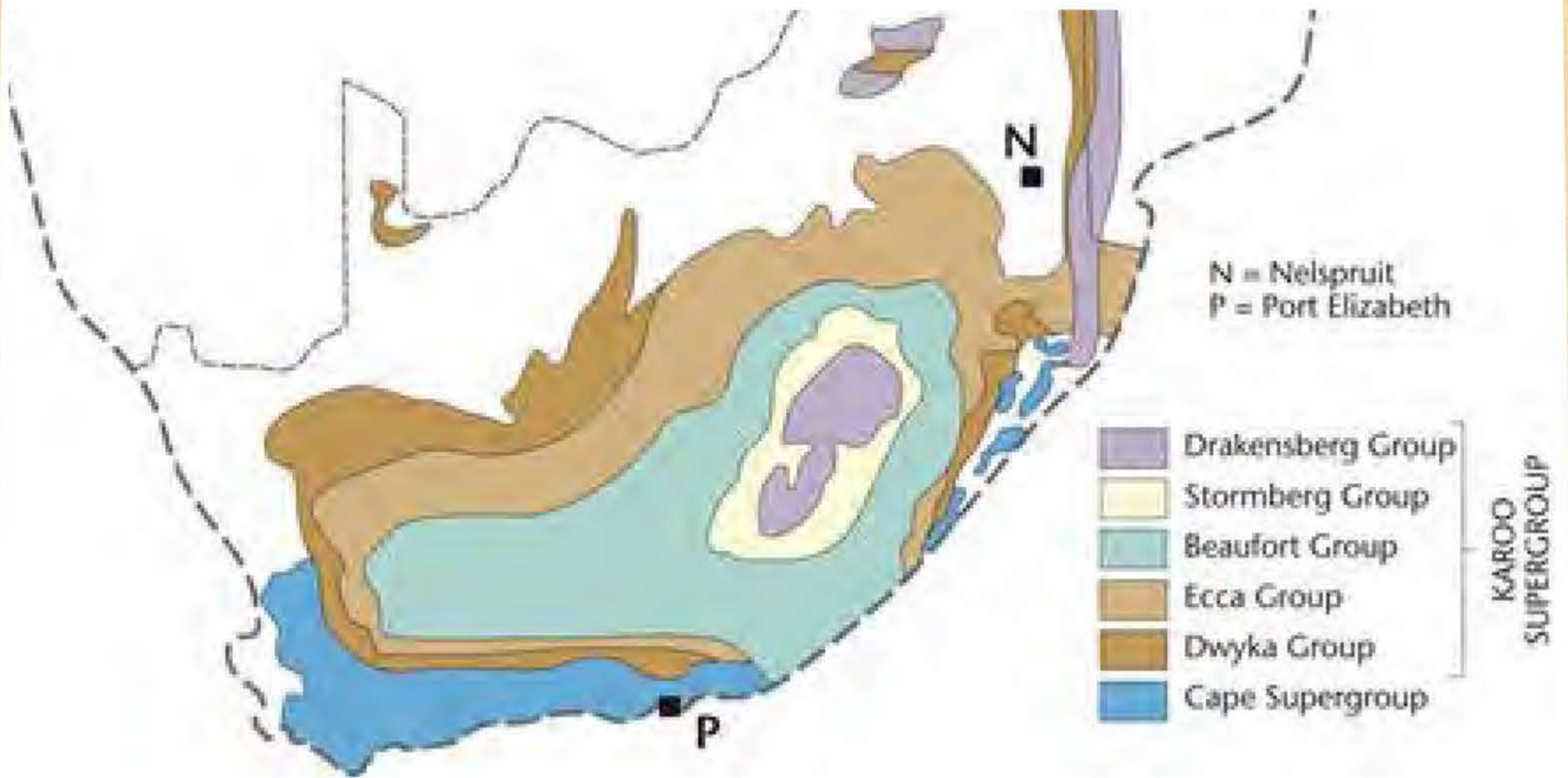


*Africanaspis doryssa* - foreground and *edmountaini* in background

Pass by the historic Bath farm in Fort Beaufort, owned by the Mildren-Hall family since the 1830s. It's where the first Karoo therapsid fossil was discovered by Andrew Geddes Bain in the 1840s, now curated at London's Natural History Museum. Another notable find in the Fort Beaufort District is the Blinkwater Monster, the first pareiasaur fossil. These ancient reptiles, weighing over a ton, thrived in the Permian period on the supercontinent Gondwana. Continue on a 3-hour journey to Graaff-Reinet, the fourth oldest district in South Africa, known for its Beaufort Group rock formations. Unpack at the Drostdy Hotel before a scenic visit to Camdeboo National Park's Valley of Desolation for sundowners.

# Early Mammals

- Presented by Bruce Rubidge





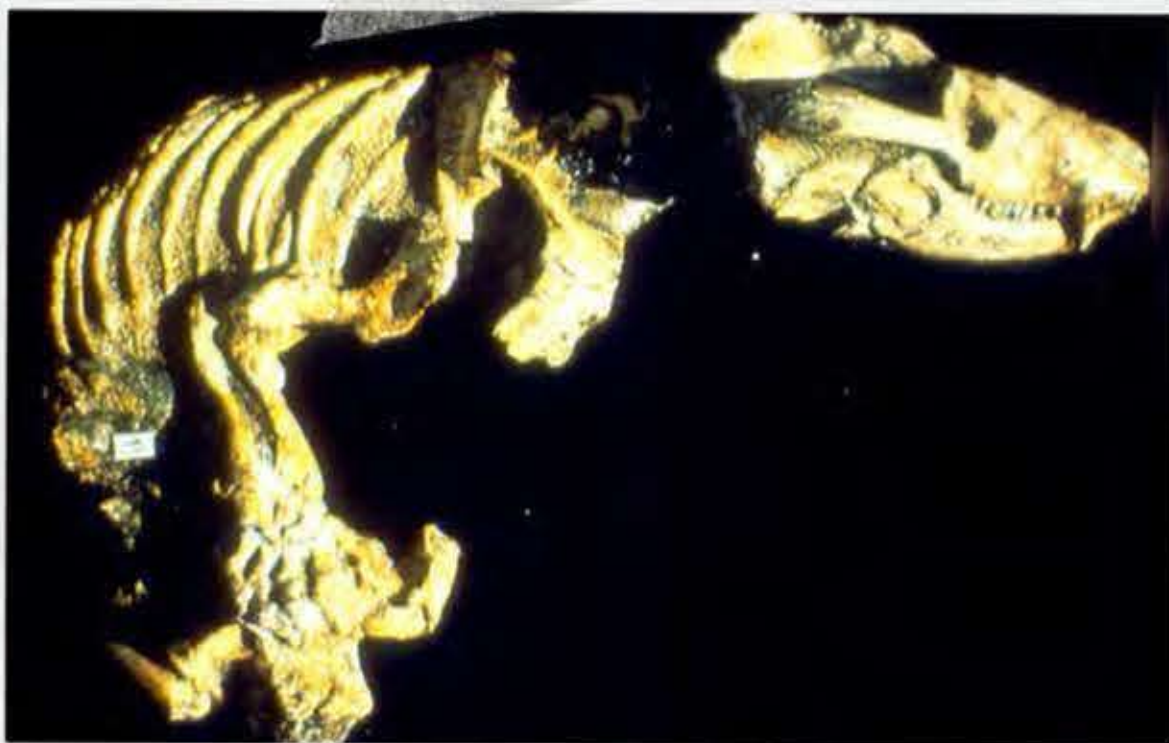
## Day 4:



Depart at 08h00 to visit Graaff-Reinet's Karoo Origins, home to the renowned Rubidge Collection of Karoo Fossils. The collection, started by farmer Sidney Rubidge of Wellwood Farm, showcases the Karoo's exceptional fossil heritage. Sidney's grandson, Bruce, a palaeontologist and former director of the Evolutionary Studies Institute at the University of the Witwatersrand, now heads Karoo Origins and an international Karoo palaeontological research program in Graaff-Reinet.



*Two Lystrosaurus specimens lying side-by-side*



*Procynosuchus - an early ancestor of mammals from the Karoo*

In the late morning, you travel to Nieu Bethesda to explore the Kitching Fossil Exploration Centre. James William Kitching, was a local who made significant fossil discoveries in the Karoo. He worked at the University of the Witwatersrand, describing ancient Karoo fossil fauna and pioneering a biostratigraphic scheme for more than 50 years. Despite lacking formal training, he earned a PhD with special permission from the university. We will also hunt for fossils in the nearby riverbed with Bruce's guidance.

Discover the fascinating Owl House, an artistic creation by recluse Helen Martins. This unique world, crafted from concrete and glass, delves into biblical themes, offering a truly remarkable experience. In the afternoon, you will drive to near the summit of Lootsberg Pass to view and explore evidence of the Permian-Triassic extinction event, the greatest extinction of all times that wiped out 90 per cent of the world's biota. Return to the Drostdy Hotel in Graaff-Reinet.



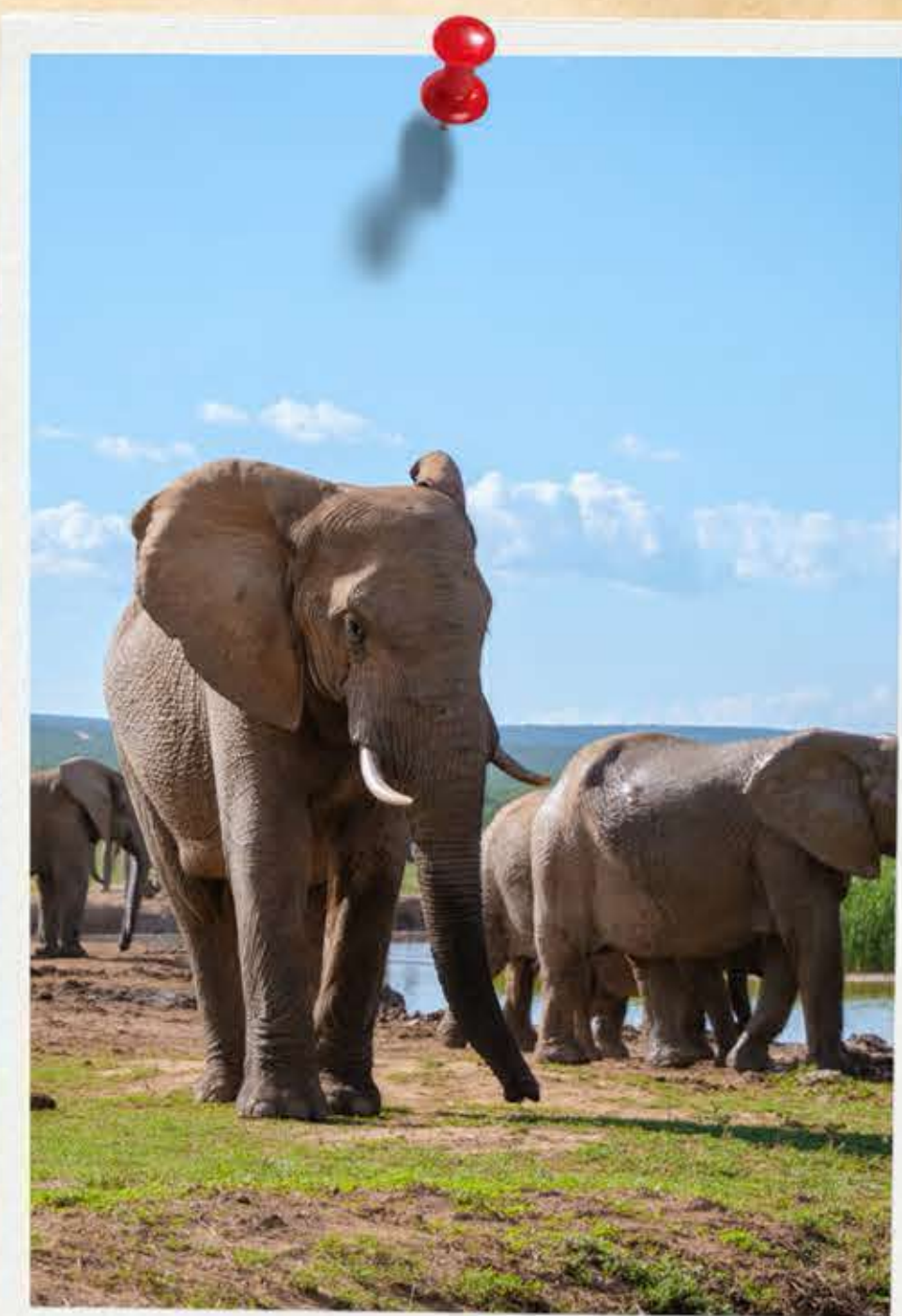
# Day 5:



Depart for Doornplaats farm to view a remarkable fossil site hosting very prolific vertebrate and invertebrate fossils, including fossilised fish scales, the fossilised burrows of ancient creatures, and a variety of fossilised skeletons in an ancient floodplain setting



In the afternoon, you depart from Graaff-Reinet to spend the night at Addo National Park.



*Skull & reconstruction of a gorgonopsian  
– predator of the Permian Period*

# Day 6:

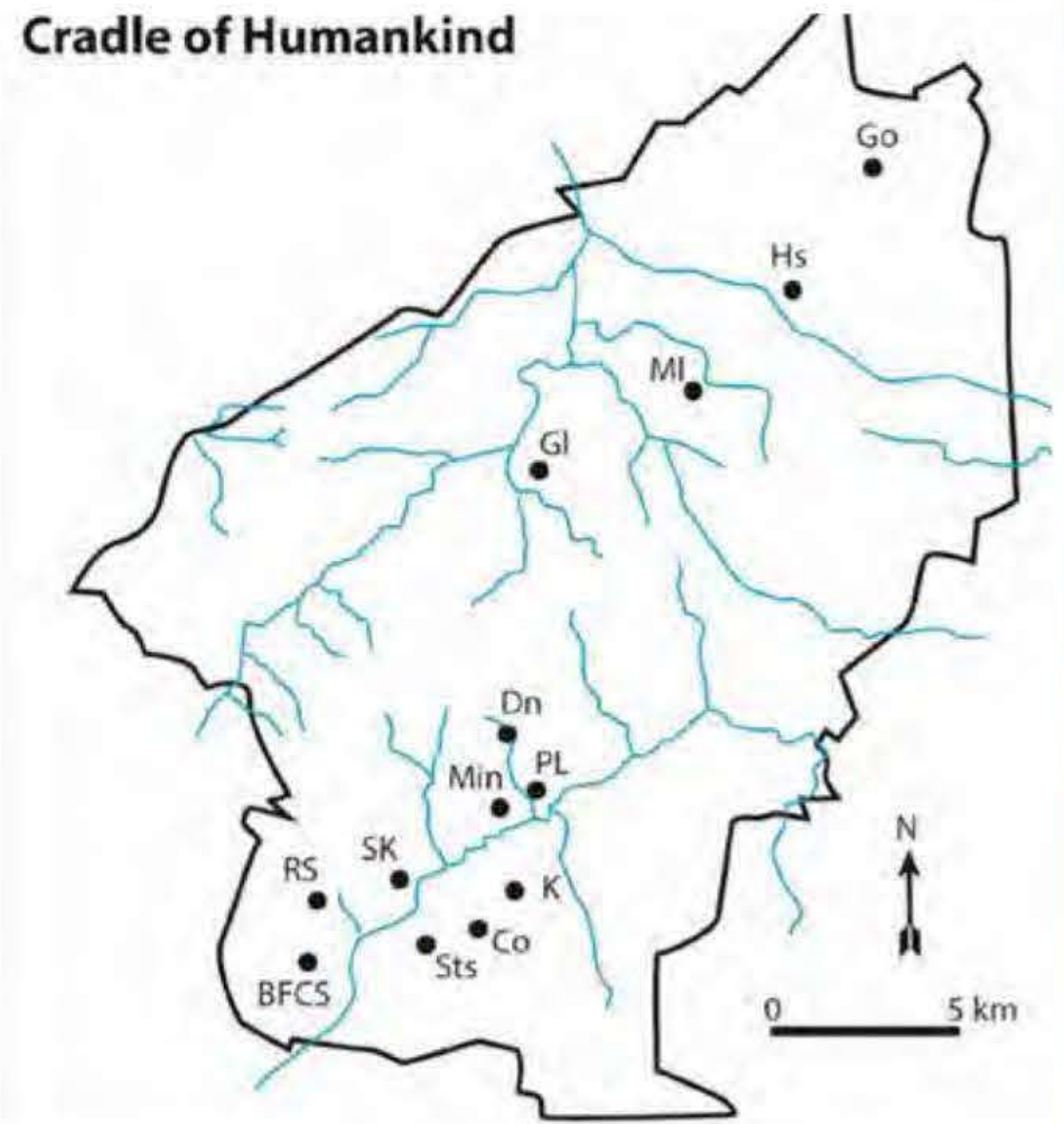
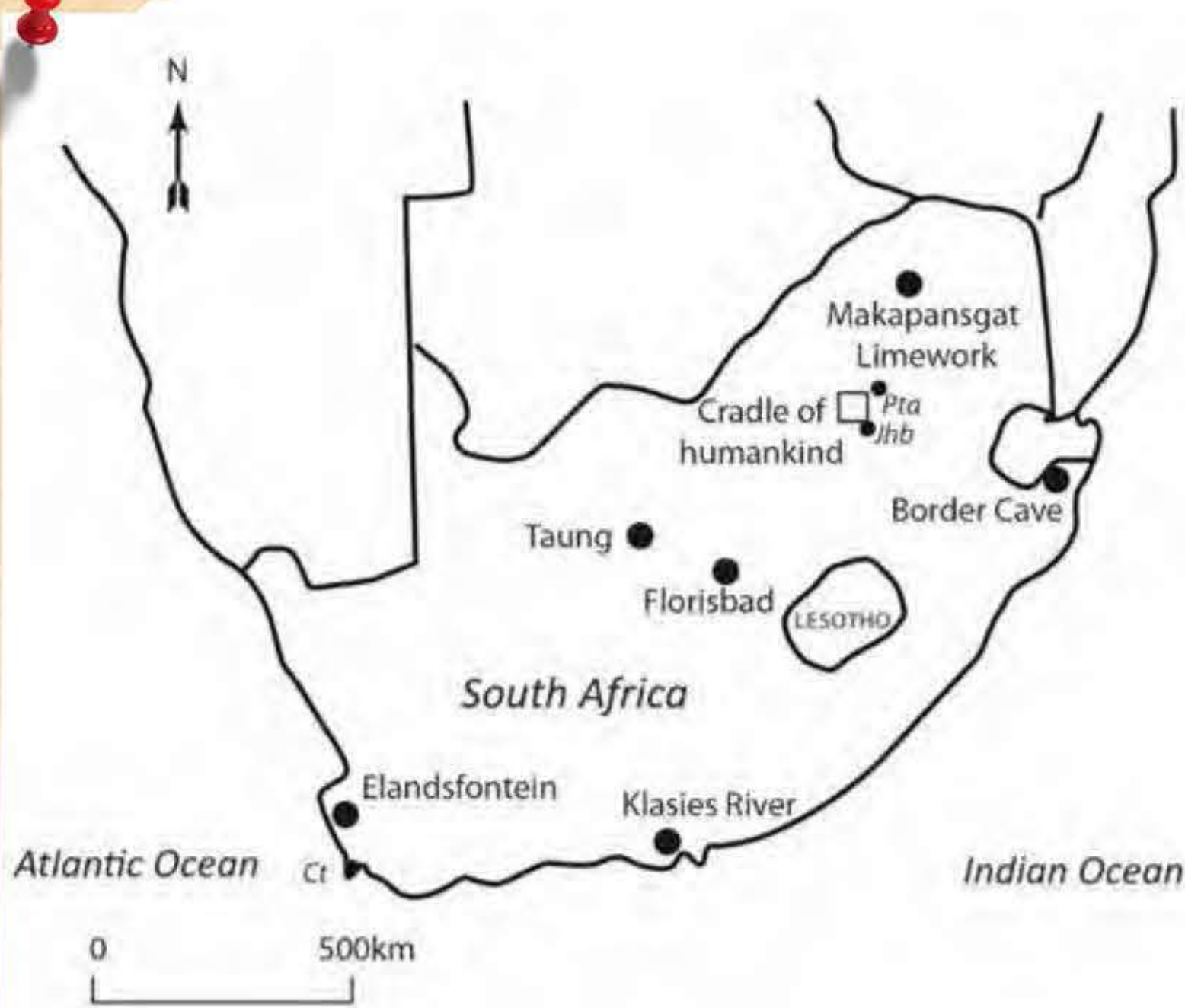
Early Game Drive through Addo National Park before proceeding to the airport at Port Elizabeth/Gqeberha. Arrive at your new accommodation in Johannesburg.



*Glossopteris leaves - Permian vegetation of Gondwana*

# Early Humans

- Presented by Christine Steininger



Location of the most important South African palaeontological and archaeological sites for human evolution and the associated fauna (General map of South Africa: Ct, Cape Town; Jhb, Johannesburg; Pta, Pretoria. Map of the Cradle of Humankind: Black dots represent caves: BFCS, Bolt's Farm Cave System; Co, Cooper's Caves; Dn, Drimolen; Gl, Gladysvale; Go, Gondolin; Hs, Haasgat; K, Kromdraai; Min, Minnaar's Cave; MI, Malapa; RS, Rising Star; SK, Swartkrans; Sts, Sterkfontein). From Thackeray, J. F. (2016). A history of research on human evolution in South Africa from 1924 to 2016. *Revue de primatologie*, (7).



# Day 7:

Start your day with a lovely breakfast before starting the human evolution course taught by Dr Christine Steininger. Human evolution, spanning millions of years, traces our biological, cognitive, and cultural development. From early ancestors to modern Homo sapiens, it defines our humanity. It enriches culture, informs medicine, and addresses contemporary challenges like climate change and inequality. This interdisciplinary study explores anthropology, biology, psychology, and philosophy, prompting us to ponder our origins, identity, and future.



*Australopithecus sediba.* © Brett Eloff, Genus



*Four Australopithecus crania* © Jason Heaton, Ronald Clarke & Ditsong Museum of Natural History.

Understanding human evolution is a multifaceted endeavor with wide-reaching implications. Scientifically, it unravels our biological makeup, aiding disease understanding, dietary needs, and explaining physical traits. Brain evolution offers insights into language and cognitive abilities. Beyond science, it delves into culture and society, revealing our complex history, communication, and social bonds. It uncovers the roots of ethical and moral beliefs, providing foundational context for modern societies' ethical frameworks.

In summary, grasping human evolution transcends academic interest, enriching our knowledge of biology, culture, and ethics, and enhancing our understanding of what it means to be human.

The study of early human tool use and innovation parallels our modern tech era, offering insights into long-term human ingenuity. It helps us place current innovations in a historical context. This understanding of adaptation to environmental changes teaches valuable lessons for present issues like climate change and sustainability. It also sheds light on our relationship with the environment, informing efforts to encourage sustainable behaviors.



*An ancient stone tool* © Brett Eloff, Genus



# Day 8:



*Palaeontology and evolutionary studies are applicable to different modern fields of study, like medicine. © Brett Eloff, Genus*

After breakfast your course continues:

Human evolution also tells the story of how humans have co-existed with other species. This historical perspective can be valuable in shaping how we think about biodiversity and our place within it. From a medical perspective, evolutionary studies have the potential to revolutionise healthcare. For example, understanding the diseases that have co-evolved with humans can inform medical research and treatments.

Lastly, on a more existential note, knowing where we come from imbues us with a sense of unity and shared history. It fosters a sense of global citizenship and belonging, enriching our collective identity. In summary, studying human evolution is not just an academic exercise; it's a vital endeavour that enriches our understanding of who we are, offering insights that can guide us in making informed decisions for our future.

## **The Cradle of Humankind**

The "Cradle of Humankind" is a South African region, 50 km northwest of Johannesburg, known for its rich discovery of early human fossils. This UNESCO World Heritage site spans 47,000 hectares with intricate limestone caves, making it a vital paleoanthropological location. It holds one of the world's largest collections of hominid fossils, offering crucial insights into human evolution over the past 4 million years. Sterkfontein and other caves in this region have been studied for decades by scientists exploring human and environmental evolution.

The Cradle of Humankind holds ancient hominin fossils, some over 3 million years old. Notable finds include "Mrs. Ples," an *Australopithecus africanus*, and "Little Foot," an almost complete *Australopithecus* skeleton. These fossils shape our knowledge of human evolution, revealing early bipedalism, brain growth, and tool use.



*Visitors interacting with exhibits at the Sterkfontein Caves © South African Tourism*



# Day 8:

...Continued...

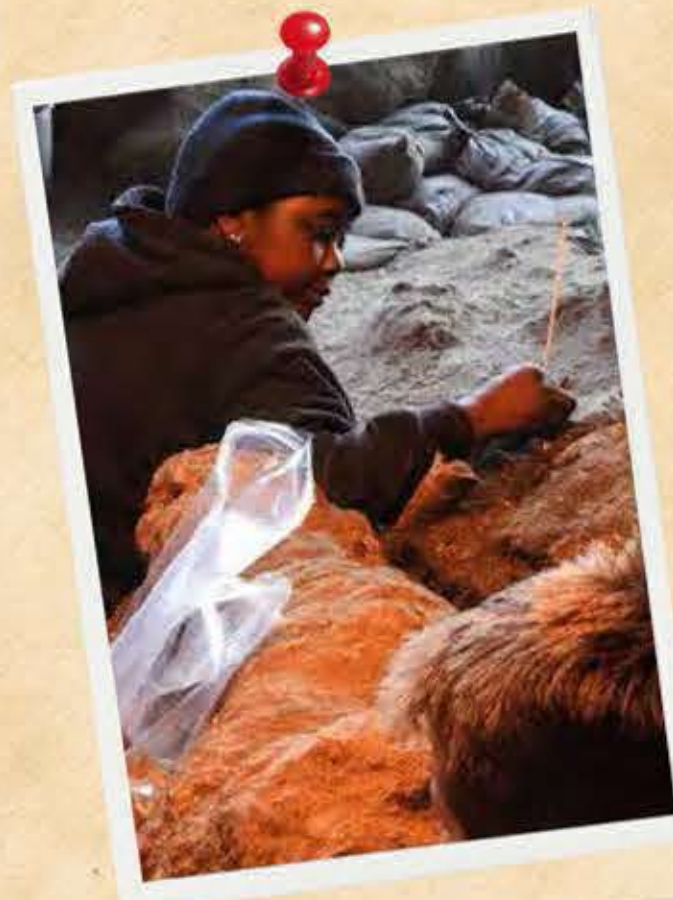


The Cradle of Humankind caves, carved from ancient sea beds of dolomitic limestone by water erosion, are vital for preserving fossils. Their complexity - chambers, tunnels, sinkholes - makes them ideal for various fossils, from hominids to plants and animals. Unique stable temperature, humidity, and mineral-rich limestone create natural preservatives, protecting ancient remains. Stratified sediment layers in the caves act as historical records, dating fossils and revealing past environments.

The Cradle of Humankind isn't just about fossils; it's a treasure trove of ancient animal, plant fossils, and stone tools. These provide insights into early human life, including diets, societies, and cultures. It serves as a multidisciplinary laboratory for anthropology, archaeology, and palaeontology, enriching our understanding of human origins.



Visitors interacting with exhibits at the Sterkfontein Caves © South African Tourism



Visitors explore the Sterkfontein caves, where famous fossils have been found. © Maropeng

After your lecture you have some time to relax and absorb all the new information. Afterwards, you have a picnic for dinner, and a night tour of the fossil site.





## Day 9:



The itinerary begins with Christine Steininger's "Cast of Characters" talk, exploring the region's fossilized remains and the evolutionary journey of early humans. Key findings like *Australopithecus africanus* and *Homo naledi*, along with advancements in dating and tool technology, will be highlighted.

Next is a half-day tour at Cooper's Cave, a site akin to a living museum. Here, you will see fossils embedded in rocks, offering insights into ancient life. The cave, studied since 1999 by Christine Steininger, has yielded important extinct animal remains and early stone tools.

The experience culminates in a "fossil hunting" activity, where you will use a unique method to identify fossils. If your tongue sticks to a rock, it's likely a fossil, due to moisture-absorbing pores in bone and stone. This hands-on approach provides a practical understanding of paleontological methods.

## Day 10:

Begin your day with a delightful breakfast before meeting Dr Tammy Reynard at the Origins Centre. Enjoy an ochre demonstration led by Tammy, where you will receive various ochre stones and learn the ancient art of making paint. Engage in a tranquil painting session, choosing to paint on either rock or paper, for a truly immersive experience. After this creative endeavor, head back to your accommodation for a leisurely day by the pool. Conclude your day with a sumptuous dinner at one of Johannesburg's vibrant restaurants, capping off a day of relaxation and cultural exploration.





# Day 11:



Your day begins with a nourishing breakfast, setting the stage for an intellectually stimulating skeleton workshop with Christine. In this session, you will delve into the intricacies of anthropology, focusing on early human evolution. Christine's expertise will guide you through an exploration of skeletal remains, offering insights into the lives and development of our ancient ancestors.



Following this enriching workshop, the day continues with a visit to the Apartheid Museum in Johannesburg. This museum, acknowledged as a pre-eminent institution dealing with 20th-century South Africa and the story of apartheid, provides a profound journey through the country's turbulent past. You will explore exhibits that trace South Africa's journey from colonialism and apartheid to democracy and healing. The museum's permanent exhibition is a thought-provoking trip through time, highlighting the country's footsteps from the dark days of bondage to a place founded on democratic principles. Key exhibits illustrate the history of racial segregation, the struggle for human rights, and the eventual rise of a diverse and often racially mixed community in Johannesburg, particularly following the discovery of gold in 1886.

The day concludes with a delightful dinner, offering a chance to reflect on the day's learnings and experiences in a relaxed and enjoyable setting.



## Day 12:



Your day will begin with a heart-warming breakfast, setting you up for an exciting shopping experience in Johannesburg. You can explore the African Craft Market in Rosebank, known for its range of excellent paintings, cushion covers, home decor items, toys, and unique clothing. Another great option is the Rosebank Mall, which offers a blend of stylish stores, and gourmet dining venues for your lunch.

In the evening, you will embark on a cosmic adventure with a stargazing event. This immersive experience begins with welcome drinks, followed by a picnic and an engaging presentation on the wonders of the night sky. The event will be held at either Cooper's Cave or Sterkfontein Cave. You will be guided through the visible celestial wonders, and you're encouraged to bring your binoculars for a laser-guided tour of the Southern sky. This promises to be a memorable experience, connecting you with the vastness of the universe in a serene setting.

**\*\*Please note that stargazing is dependent on weather conditions and sky clarity on the day of the event.**



## Day 13:



Begin your day with an early departure from your hotel, heading towards the Magaliesberg Biosphere Reserve. Here, you'll embark on an exciting canopy tour, ziplining over a landscape rich in natural beauty and geological history. This adventure high above the ground offers spectacular views and an adrenaline rush, guided by professionals for a safe and memorable experience. After this exhilarating activity, you'll visit a local restaurant located near "Little Paris", after which you will return to your accommodation, bringing back unforgettable memories.



## Day 14:

Begin your morning with the Balloon Safari Team near Hartebeesport Dam. Enjoy pre-flight coffee, tea, and freshly baked muffins at the lantern-lit Clubhouse Pavilion before a 1-hour hot air balloon ride over the Magalies River Valley. Marvel at the sunrise and stunning landscapes from above. After your serene flight, celebrate your landing with a glass of South African sparkling wine or juice amidst the morning light. A mini-bus will then escort you back for a sumptuous sparkling wine breakfast with picturesque views of the mountains and manicured gardens. Relax and make the most of the remainder of your day at your own pace.



## Day 15:



As your journey comes to a close, this final day offers a serene opportunity to bask in the warm African sun one last time. Reflect on the unforgettable experiences and connections made, immersing yourself in the tranquil beauty of the surroundings. Later, you will prepare for your departure, carrying with you a treasure trove of memories as you head to the airport. This is not just a farewell to a magnificent adventure, but an invitation to return to the rich tapestry of Africa. Safe travels as you fly out, holding onto the spirit of this incredible journey.

# Terms

## Included

- Local flights
- Accommodations with bed and breakfast
- Various activities mentioned in this itinerary
- Entrance fees
- Game drive at Addo National Park
- Picnic dinner with a night tour of a fossil site
- Stargazing event including dinner
- Transfers throughout the trip
- Local guides and tour leaders

## Excluded

- International flights
- Visa (if required)
- Travel insurance
- Tipping/Gratuities (driver, cooks, guides, etc.)
- Lunch and dinner
- Personal expenses

**It's essential for participants to come prepared with sturdy, comfortable footwear suitable for walking on uneven terrain. Additionally, a protective hat and high-SPF sunscreen are strongly advised to ensure safety and comfort during our outdoor activities.**

**...IN YOUR WILDEST DREAMS...**

\*All itineraries can be adjusted/customised to suit your specific needs

# Why South Africa?



South Africa, on the continent's southern tip, is the 25th-largest country in the world – slightly less than twice the size of Texas. It boasts a lengthy coastline, stretching more than 1,500 miles along two oceans, the South Atlantic on the west and the Indian on the south and east. South Africa is neighbored by Namibia in the northwest, Zimbabwe and Botswana in the north, with Mozambique, Swaziland and Lesotho in the northeast.

Its natural beauty and scenic wonders are legendary, from its soaring mountain peaks and passes, dense and ancient forests, to its miles of unspoiled coastline and rolling flower fields and grasslands of every hue. South Africa truly offers something to lift everyone's spirits.

South Africa is known as the adventure capital of the world. Whether it's seeing the big game animals, diving with Great White Sharks, death defying adventure sports or discovering the humanity and generosity of other cultures. Game viewing and safari in South Africa is as up-close and wild as it gets. Almost anywhere you travel in South Africa you will experience an overwhelming abundance of nature, wildlife, culture, adventure, heritage and good vibes.

One of the world's most captivating cities, Cape Town – and the Cape Peninsula up to Cape Point – are famous for its scenic beauty and celebrity beaches, 3,500 foot Table Mountain rising above the city, whale-watching, world-class shopping, nightlife, food & wine, and a laid-back atmosphere. Indeed, with wine regions stretching from the Western to the far Northern Cape and the edge of the Karoo, one can almost taste their way around South Africa.

South Africa's 'City of Gold' is Johannesburg, which pulsates with an African heartbeat felt in its endless opportunities for shopping, entertainment, freedom tours and eating out, while the world-renowned Kruger National Park is as large as Massachusetts, and consists of nearly 5 million acres and features 16 ecosystems.

When it's time to plan the most exotic golf getaway imaginable, think South Africa. The quintet of Sun City, Johannesburg, Cape Town, the Garden Route and Durban will provide the trip of a lifetime and memories for a lifetime too.

# About Us

## Southern Sky Adventures

For almost two decades Southern Sky Adventures has introduced discerning travellers to the sheer magnificence of AFRICA. A land of warm welcomes, breathtaking sunsets, pristine wilderness areas and diversity as colourful as the local artwork.

Our tailormade- and expertly-guided safaris showcase Africa's finest hidden gems, the elusive BIG 5, wild remote locations and a natural space to unplug from the stress of modern-day living. We pride ourselves on the delivery of exceptional, once-in-a-lifetime and truly memorable travel experiences for not only families, honeymooners and friends but also business travellers, school- & university groups and adventure seekers. Although passionate about travel, we care deeply for the preservation of these untouched wild areas, the inhabiting wildlife and the surrounding communities.

Sit back, relax and allow our team of destination specialists to design and deliver your dream vacation!



Southern Sky  
Adventures



[www.southernskyadventures.com](http://www.southernskyadventures.com)



@southernsky  
adventures

